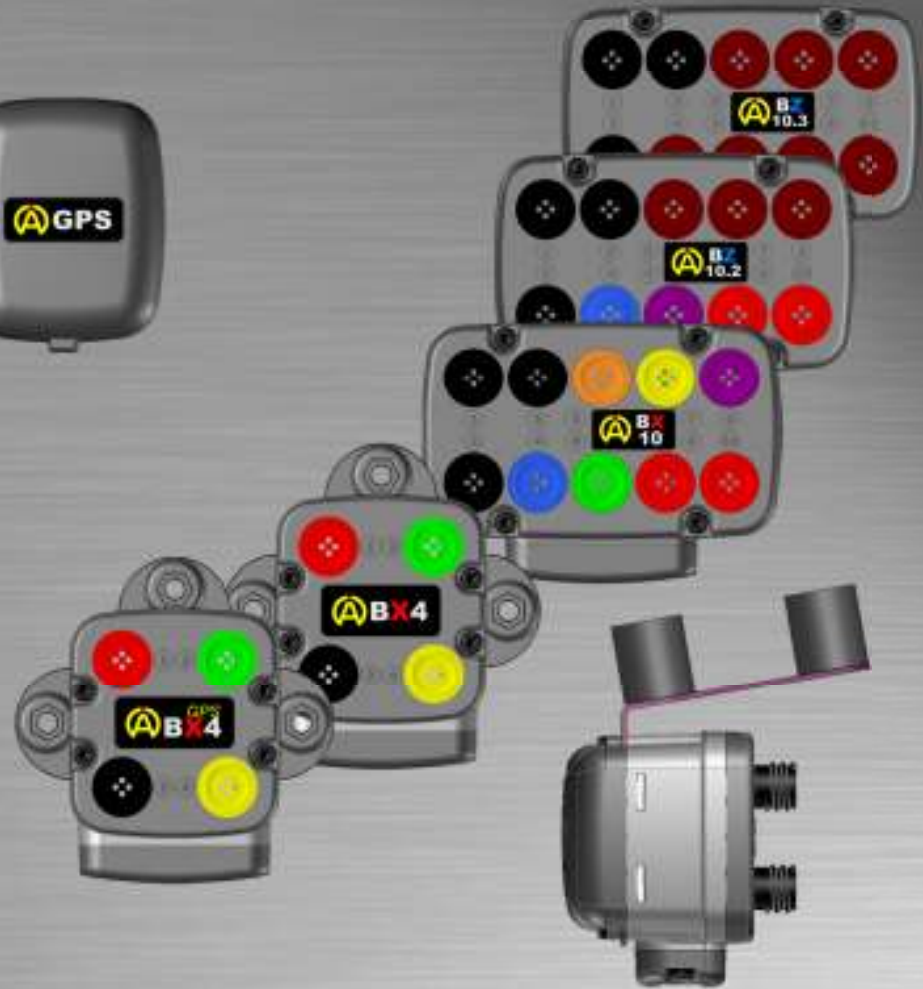
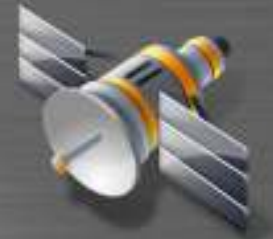




January 19th, 2012



# ALFANO "2012"





ADSGPS



ADS

ADM

ADL



ABX4



ABX4GPS



ABX10



ABGPS



DC 6-12V

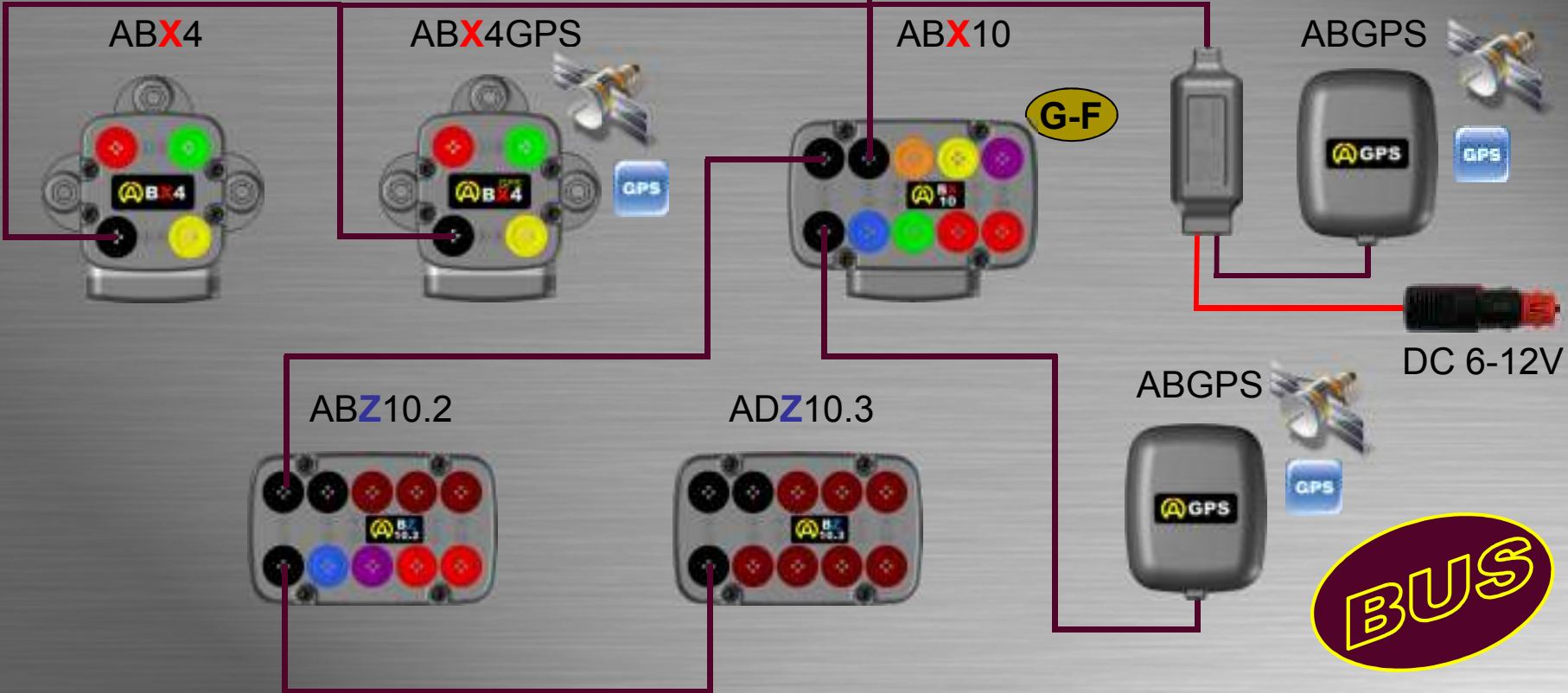
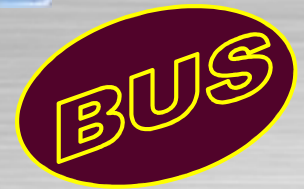
ABZ10.2



ADZ10.3



ABGPS







ADSGPS



ADS

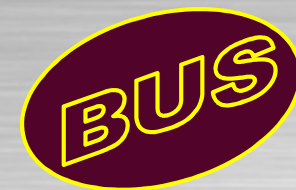
ADM

ADL



## SMALL model display, GPS self-contained

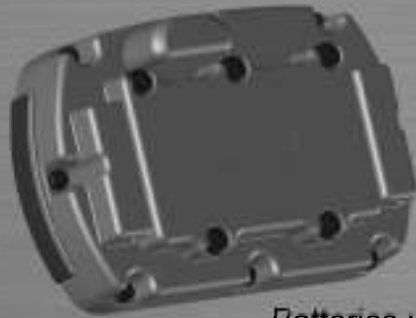
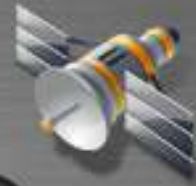
- > Timing (GPS)
- > Programming until 5 partials per lap
- > Programming until 5 points of speed per lap
- > Data recording : 10 Hertz
- > 4 Leds : flash partials passage
- > 2 Leds : flash points of speed passage
- > Bluetooth
- > Hermetic to water projections (IP56)
- > Screen (mm/pixels): 54.5x32/160x94
- > Backlight





325-€

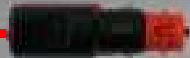
# ADSGPS



Batteries : 2 x AA



12 V



- Fixing by clamping ring OR windscreen support
- Option : Battery feed > cigar lighter 12V



Windscreen support for ADS, ADSGPS, ADM, ADL



Motocross – Quad cross – Jet ski – Car – etc...



# Software

## Download process



This software must be of very simple use



- Every day, a new file will automatically be generated to receive all the files
- Selection of one or several files, to analyze them or erase them



# Software

# Analysis Process

**ALFANO**

Samedi 18 Janvier 2011

- Angelo 12h05
  - 1 1'56'12
  - 2 1'55'54
  - 3 1'53'22
  - 4 1'53'36
  - 5 1'52'89
  - 6 1'53'45
- Salvatore 13h51
  - 1 1'57'45
  - 2 1'54'54
  - 3 1'54'58

Dimanche 19 Janvier 2011

- Angelo 12h56
  - 1 1'58'23
  - 2 1'58'66
- Salvatore 14h12
  - 1 1'57'01
  - 2 1'55'56
  - 3 1'53'74
  - 4 1'53'88
- Vito 15h25
  - 1 0'53'56
  - 2 0'51'56
  - 3 0'52'00
  - 4 0'53'15
  - 5 0'51'83

Time : 1'55'54	Time : 1'53'74
Sector 1 : 22'25	Sector 1 : 53'16
Sector 2 : 25'16	Sector 2 : 60'58
Sector 3 : 55'03	Sector 3 :
Sector 4 : 13'10	Sector 4 :
Sector 5 :	Sector 5 :
Speed AVG (Km/h) : 80.3	Speed AVG (Km/h) : 72.8
Speed 1 : 106,2	Speed 1 : 96,2
Speed 2 : 78,6	Speed 2 : 81,5
Speed 3 : 56,2	Speed 3 : 62,2
Speed 4 :	Speed 4 : 51,5
Speed 5 :	Speed 5 :

Time : 6'30      Time : 6'30  
Speed (Km/h) : 65.7      Speed (Km/h) : 72.9

Navigation: [Left Arrow] [Right Arrow] [Slider]

Samedi 18 Janvier 2011

- Angelo 12h05
  - 1 1'56'12
  - 2 1'55'54
  - 3 1'53'22
  - 4 1'53'36
  - 5 1'52'89
  - 6 1'53'45
- Salvatore 13h51
  - 1 1'57'45
  - 2 1'54'54
  - 3 1'54'58

Dimanche 19 Janvier 2011

- Angelo 12h56
  - 1 1'58'23
  - 2 1'58'66
- Salvatore 14h12
  - 1 1'57'01
  - 2 1'55'56
  - 3 1'53'74
  - 4 1'53'88
- Vito 15h25
  - 1 0'53'56
  - 2 0'51'56
  - 3 0'52'00
  - 4 0'53'15
  - 5 0'51'83

**DELETE**





ADSGPS



ADS



ADM



ADL



ABX4



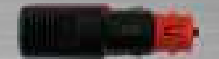
ABX4GPS



ABX10



ABGPS



DC 6-12V

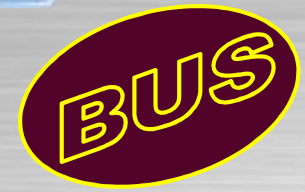
ABZ10.2



ADZ10.3



ABGPS







ADSGPS



ADS



ADM



ADL



ABX4



ABX4GPS



ABX10



G-F

ABGPS



ABZ10.2



ADZ10.3



ABGPS



DC 6-12V

BUS



ADSGPS



ADS



ADM



ADL



ABX4



ABX4GPS



ABX10



G-F

ABGPS



ABZ10.2



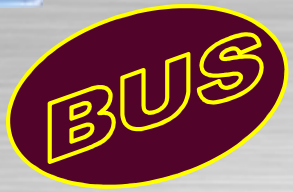
ADZ10.3



ABGPS



DC 6-12V





ADSGPS



ADS



ADM



ADL



ABX4



ABX4GPS



ABX10



ABGPS



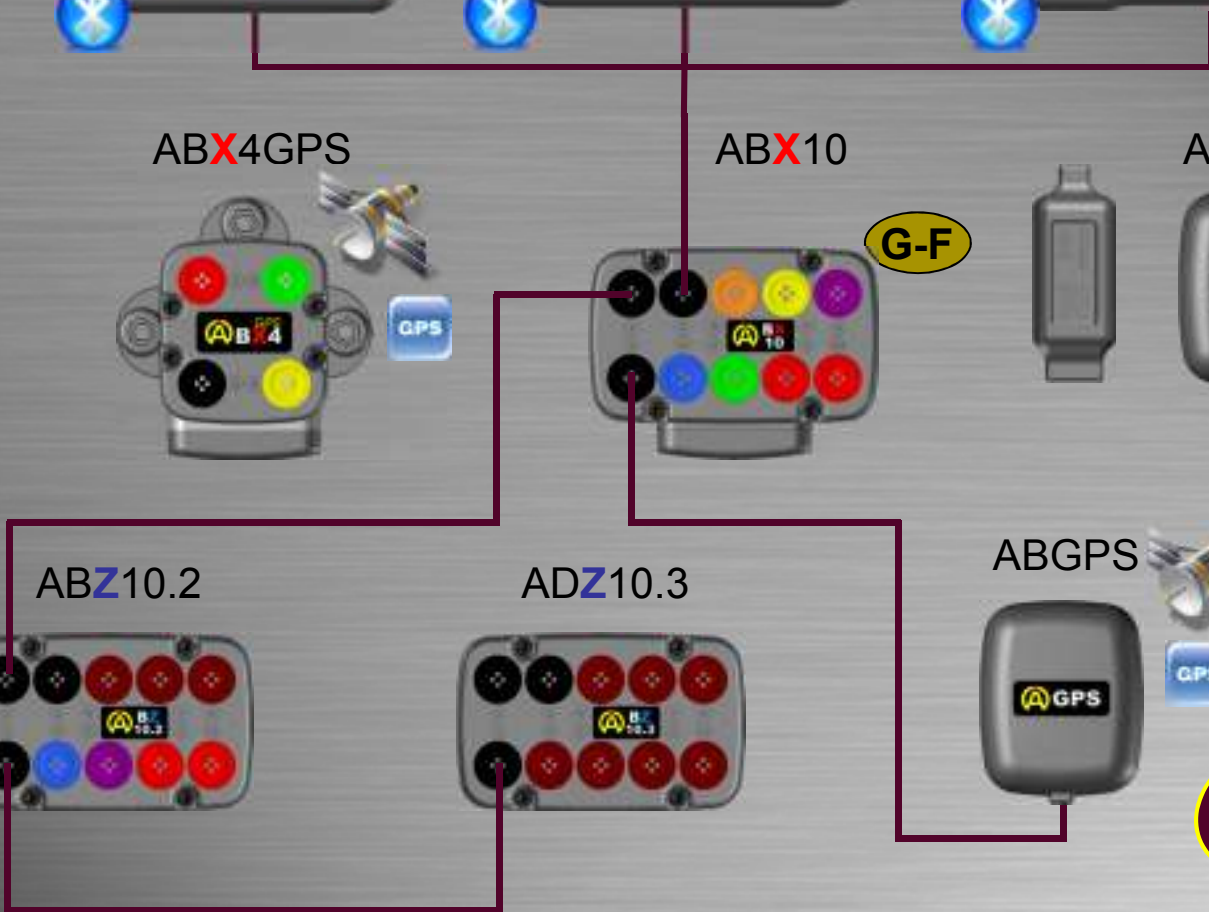
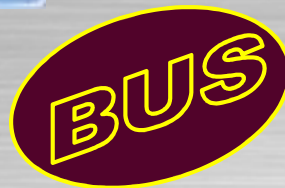
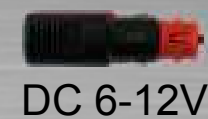
ABZ10.2



ADZ10.3



ABGPS







ADSGPS



ADS



ADM



ADL



ABX4



ABX4GPS



ABX10



ABGPS



DC 6-12V

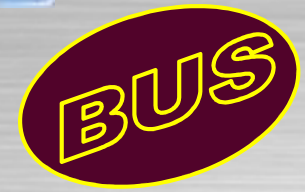
ABZ10.2



ADZ10.3



ABGPS





ADSGPS

GPS

ADS

ADM

ADL



## SMALL model display for BOX : ABX4 / ABX4GPS / ABX10

- > Timing to the hundredth of second
- > Data recording : 5/10/20 Hertz
- > 4 Leds : RPM/Lambda
- > 2 Leds : Temperature/Pressure
- > 5 Counters of engine time value
- > Bluetooth
- > Hermetic to water projections (IP56)
- > Screen (mm/pixels): 54.5x32/160x94
- > Backlight

185-€





ADSGPS



ADS

ADM

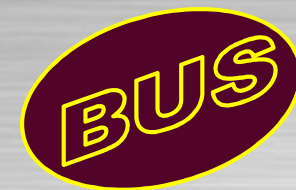
ADL



## MEDIUM model display for BOX : ABX4 / ABX4GPS / ABX10

- > Timing to the hundredth of second
- > Data recording : 5/10/20 Hertz
- > 9 Leds : RPM/Lambda
- > 2 Leds : Temperature/Pressure
- > 5 Counters of engine time value
- > Bluetooth
- > Hermetic to water projections (IP56)
- > Screen (mm/pixels) : 77x45/160x94
- > Backlight

205-€







ADSGPS



ADS

ADM

ADL



## LARGE model display for BOX : ABX4 / ABX4GPS / ABX10

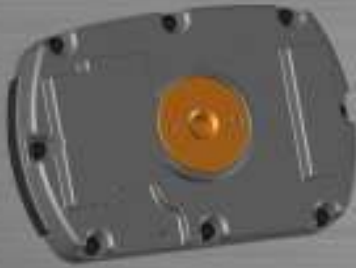
- > Timing to the hundredth of second
- > Data recording : 5/10/20 Hertz
- > 9 Leds : RPM/Lambda
- > 2 Leds : Temperature/Pressure
- > 5 Counters of engine time value
- > Bluetooth
- > Hermetic to water projections (IP56)
- > Screen (mm/pixels) : 98x54.5/160x94
- > Backlight

**255-€**

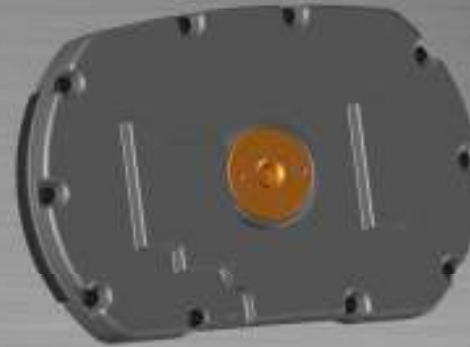
**BUS**



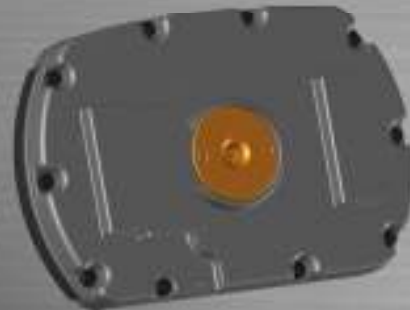
ADS



ADL



ADM





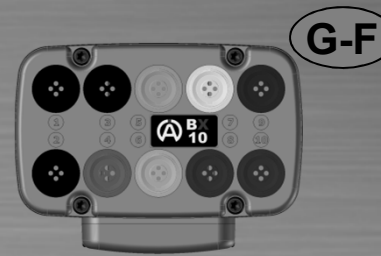
ABX4



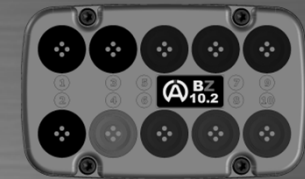
ABX4GPS



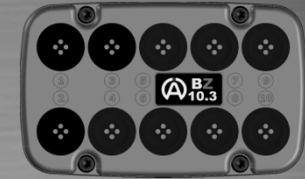
ABX10







ABZ10.2



ADZ10.3



**Box with 4 inputs for display : ADS / ADM / ADL**

-  1 Input : BUS (Display)
-  1 Input : Magnetic/Infrared (Time of passage)
-  1 Input : RPM (Max 30.000Tr/m)
-  1 Input : Temperature (Max 1000°C)

**145-€**

- Hermetic to water projections (IP56)  
- 2 x AA  
- 165 gr





# ABX4 Box

NTC type Temperature Sensor



K type Temperature Sensor



Infrared Receiver



Magnetic Sensor



(High Voltage) Coil



(Low Voltage) Electronic Computation Unit



**BUS**

Different Display Options



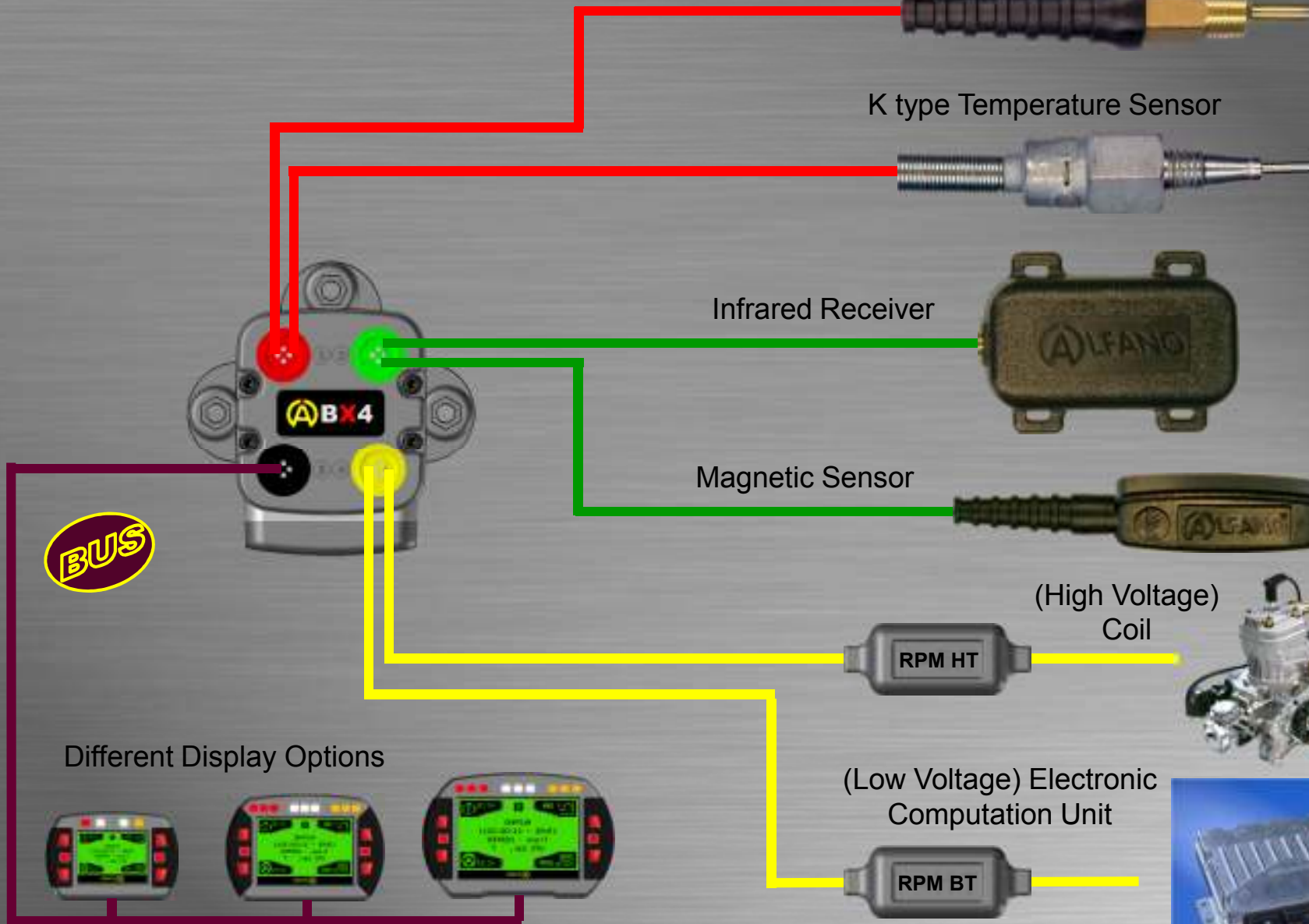
ADS



ADM



ADL





ABX4



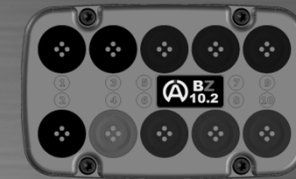
ABX4GPS



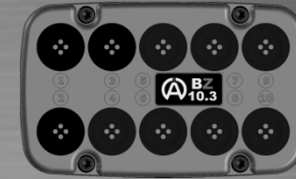
ABX10








ABZ10.2



ADZ10.3



Box with 4 inputs with GPS integrated, for display :  
ADS / ADM / ADL

-  1 Input : BUS (Display)
-  1 Input : Magnetic/Infrared (Time of passage)
-  1 Input : RPM (Max 30.000Tr/m)
-  1 Input : Temperature (Max 1000°C)
-  Self-contained GPS

205-€

- Hermetic to water projections (IP56)  
 - 2 x AA  
 - 177 gr



# ABX4GPS Box



NTC type Temperature Sensor



K type Temperature Sensor



Infrared Receiver



Magnetic Sensor



(High Voltage) Coil



(Low Voltage) Electronic Computation Unit



Different Display Options



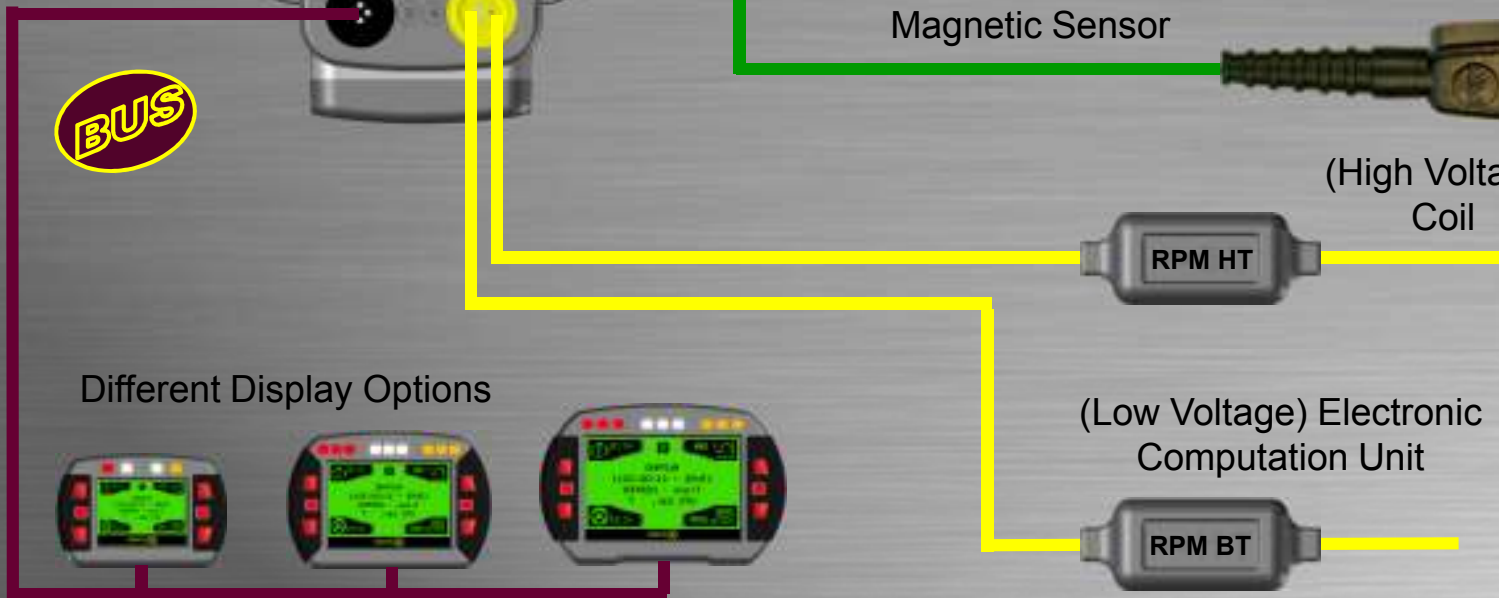
ADS



ADM



ADL







ABX4



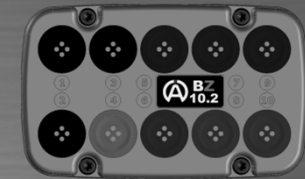
ABX4GPS



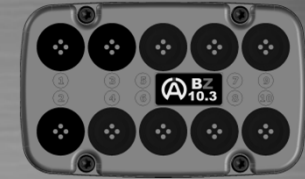
ABX10











ABZ10.2



ADZ10.3



Box with 10 inputs with G-Force sensor integrated, for display :  
ADS / ADM / ADL

-  3 Inputs : BUS (Display/GPS/Lambda/extra BOX/etc...)
-  1 Input : Magnetic/Infrared (Time of passage)
-  1 Input : RPM (Max 30.000Tr/m)
-  2 Inputs : Temperatures (Max 1000°C)
-  1 Input : External Power Supply 12V
-  1 Input : Speed
-  1 Input : Pressure/Analog 0-5V
-  G-Force sensor (10G) 3 dimensional integrated

**375-€**

- Hermetic to water projections (IP56)  
- 2 x AA  
- 165 gr



# ABX10 Box

BUS Network

Displays >

ADS

ADM

ADL



**G-Force**  
3 Dimensional

**BUS**

ABX10



Possibility of adapting in the future other types of sensors



GPS

LSU 4.2

Interface for use of a wide band LAMBDA sensor

12 V

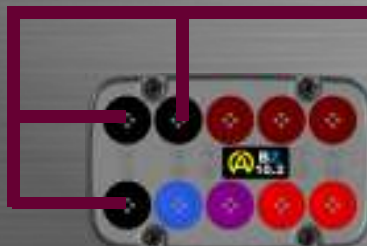


BUS CAN



Interface for communication with the BUS CAN of the vehicle. It allows to obtain information such as :  
Temperature, Pressure, RPM, Speed, etc...  
With the original electronic network of the vehicle

Extra Box





# ABX10 Box

12 V Battery

12 V Lighting

**G-Force**  
3 Dimensional



(High Voltage) Coil



(Low Voltage) Electronic Computation Unit



Resistive Pressure Sensor



Valve Sensor **Analog** 5V



Pressure Sensor  
**Analog** 5V

0-400Bars

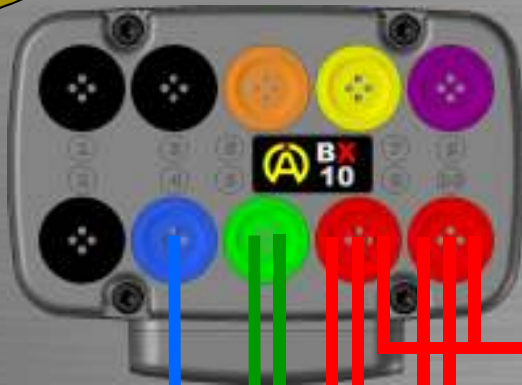






# ABX10 Box

**G-Force**  
3 Dimensional



NTC type Temperature Sensor



K type Temperature Sensor



LAMBDA Sensor 2 Rows / Valve Sensor ON/OFF



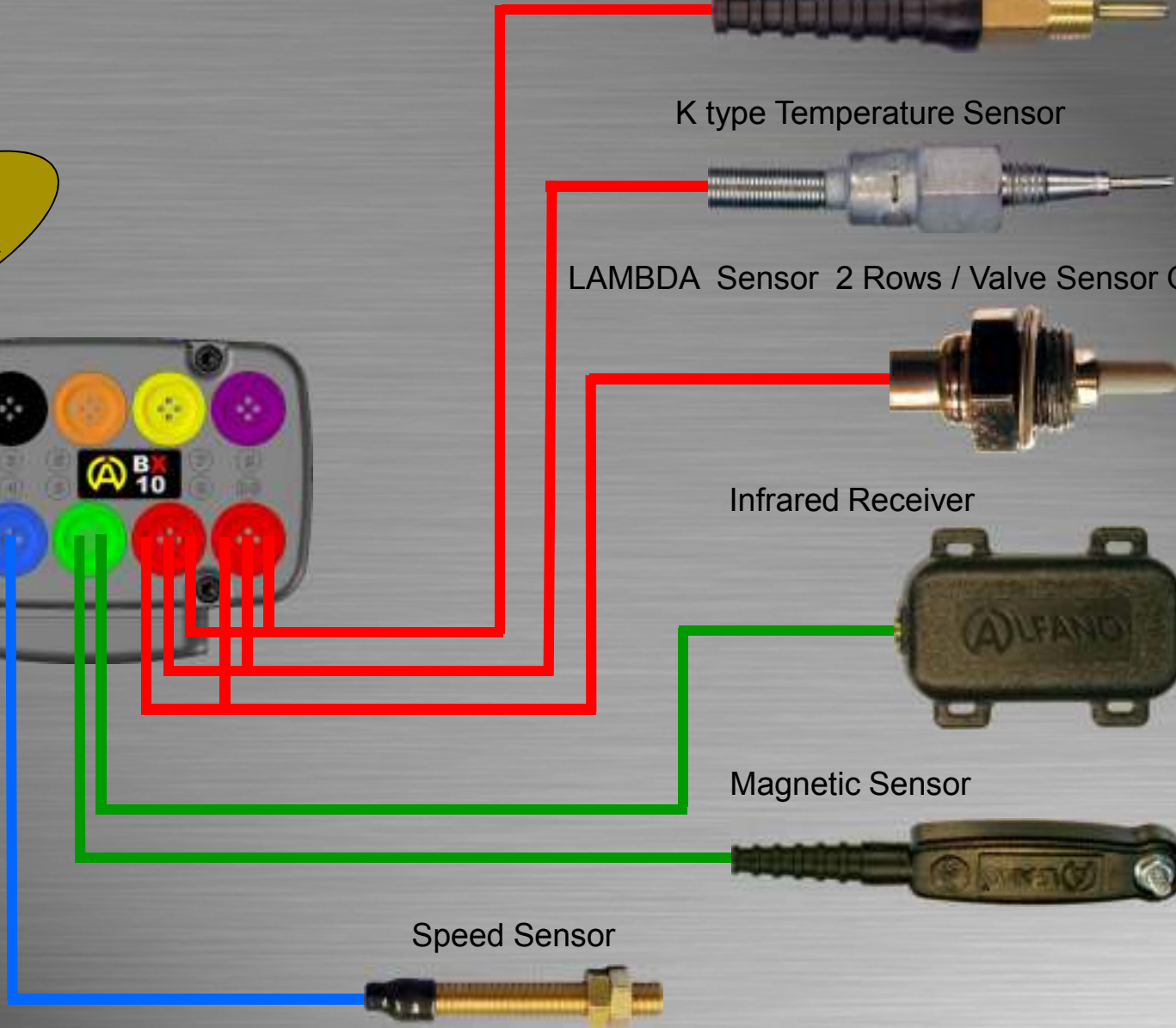
Infrared Receiver



Magnetic Sensor



Speed Sensor





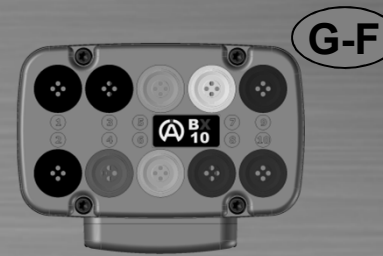
ABX4



ABX4GPS



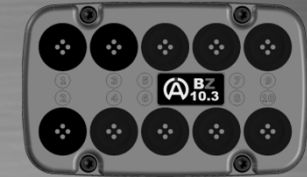
ABX10








ABZ10.2



ADZ10.3



### Extra Box with 10 inputs for Box ABX10

-  3 Inputs : BUS (Display/GPS/Lambda/extra BOX/etc...)
-  2 Inputs : Temperatures (Max 1000°C)
-  1 Input : Speed
-  1 Input : Pressure/Analog 0-5V
-  3 Inputs : Potentiometer/Analog 0-5V (Pos. steering wheel, pedals, shock absorbers)

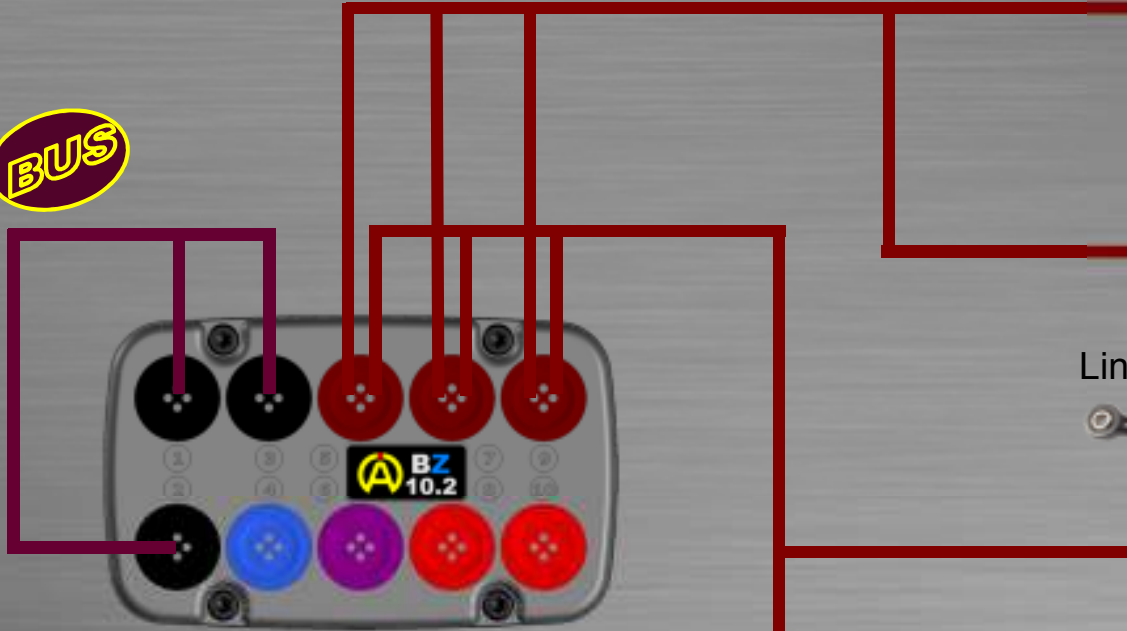
**305-€**

- Hermetic to water projections (IP56)  
- 88 gr



# ABZ10.2 Box

**BUS**



Linear Potentiometers « 10K »



Shock absorbers

Rotary Potentiometers « 10K »



Linear Potentiometers **Analog** « 5V »

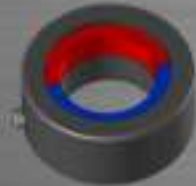


Shock absorbers

Rotary Potentiometers **Analog** « 5V »



Hall Sensor



Position Steering Wheel / Pedals, **Analog** « 5V »



Pressure sensor **Analog** « 5V »



0-400 Bars





# ABZ10.2 Box



Temperature Sensor NTC



Temperature Sensor K



Resistive Pressure Sensor



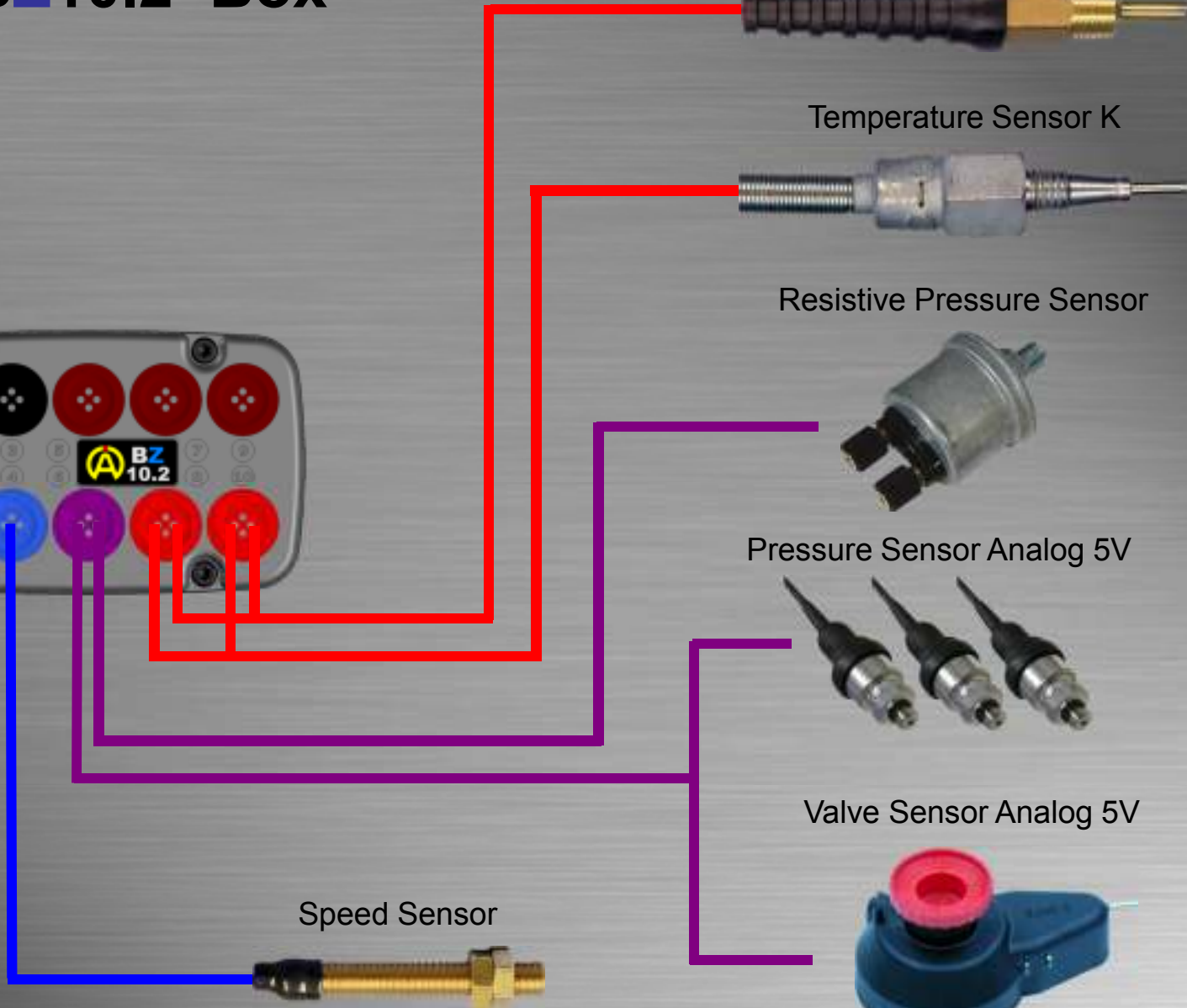
Pressure Sensor Analog 5V



Valve Sensor Analog 5V



Speed Sensor





ABX4



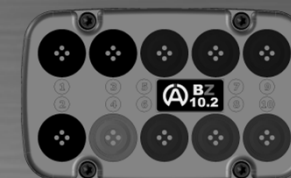
ABX4GPS



ABX10



ABZ10.2



ADZ10.3



### Extra Box with 10 inputs for Box ABX10

- 3 Inputs : BUS (Display/GPS/Lambda/extra BOX/etc...)
- 7 Inputs : Analog 0-5V (Pos. steering wheel, pedals, shock absorbers)

**305-€**

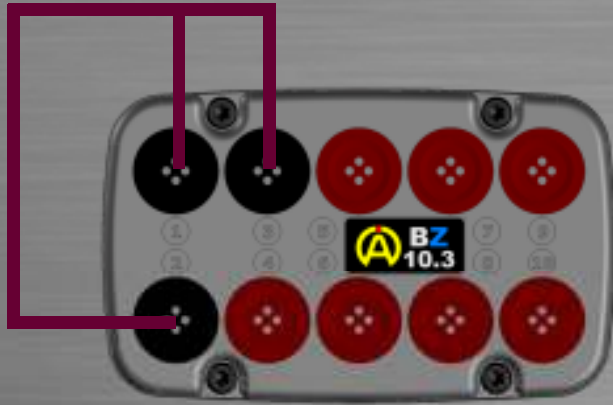
- Hermetic to water projections (IP56)  
- 88 gr



# ABZ10.3 Box

**BUS**

7 Inputs



Linear Potentiometers « 10K »



*Shock absorbers*

Rotary Potentiometers « 10K »



Linear Potentiometers **Analog** « 5V »

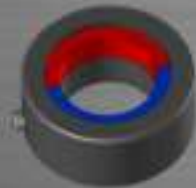


*Shock absorbers*

Rotary Potentiometers **Analog** « 5V »



*Hall Sensor*



Position Steering Wheel / Pedals, **Analog** « 5V »



Pressure sensor **Analog** « 5V »



0-400 Bars





# STOP MODE





# STOP MODE





# COUNTERS MODE







# DATA MODE





# DATA MODE





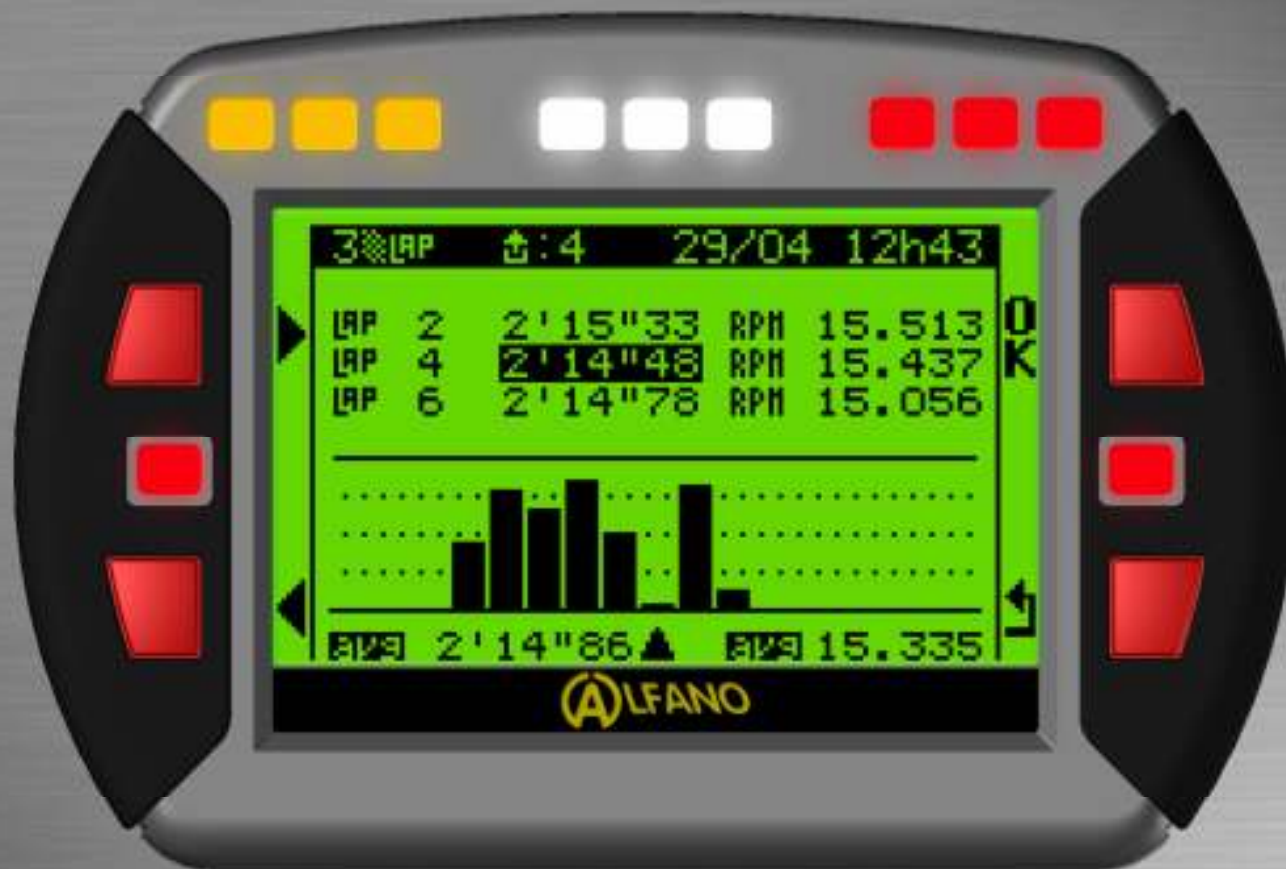
# DATA MODE







# DATA MODE





# DATA MODE





# DATA MODE







# DATA MODE





# DATA MODE





# DATA MODE







# THEORETICAL MODE





# THEORETICAL MODE





# SETUP MODE





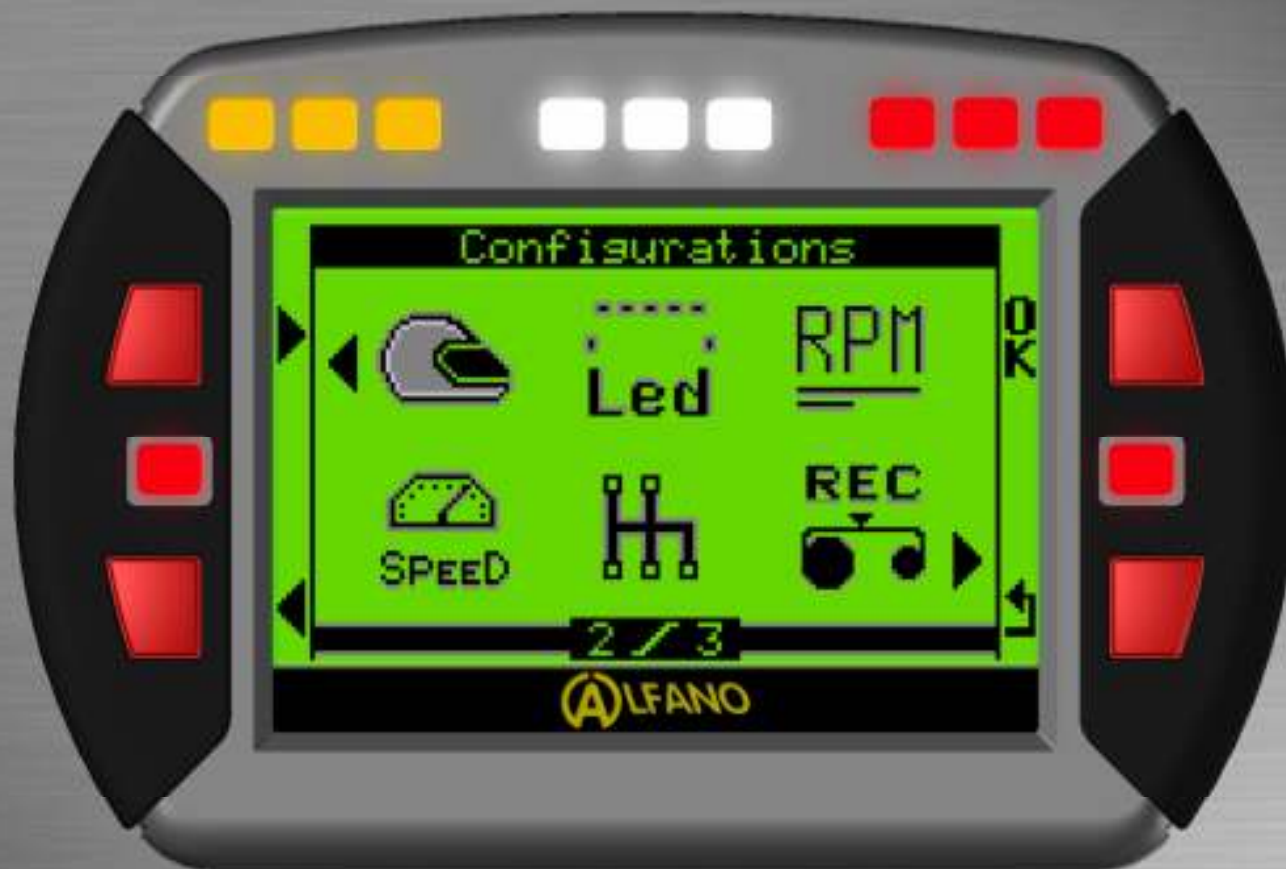
# SETUP MODE







# SETUP MODE





# SETUP MODE



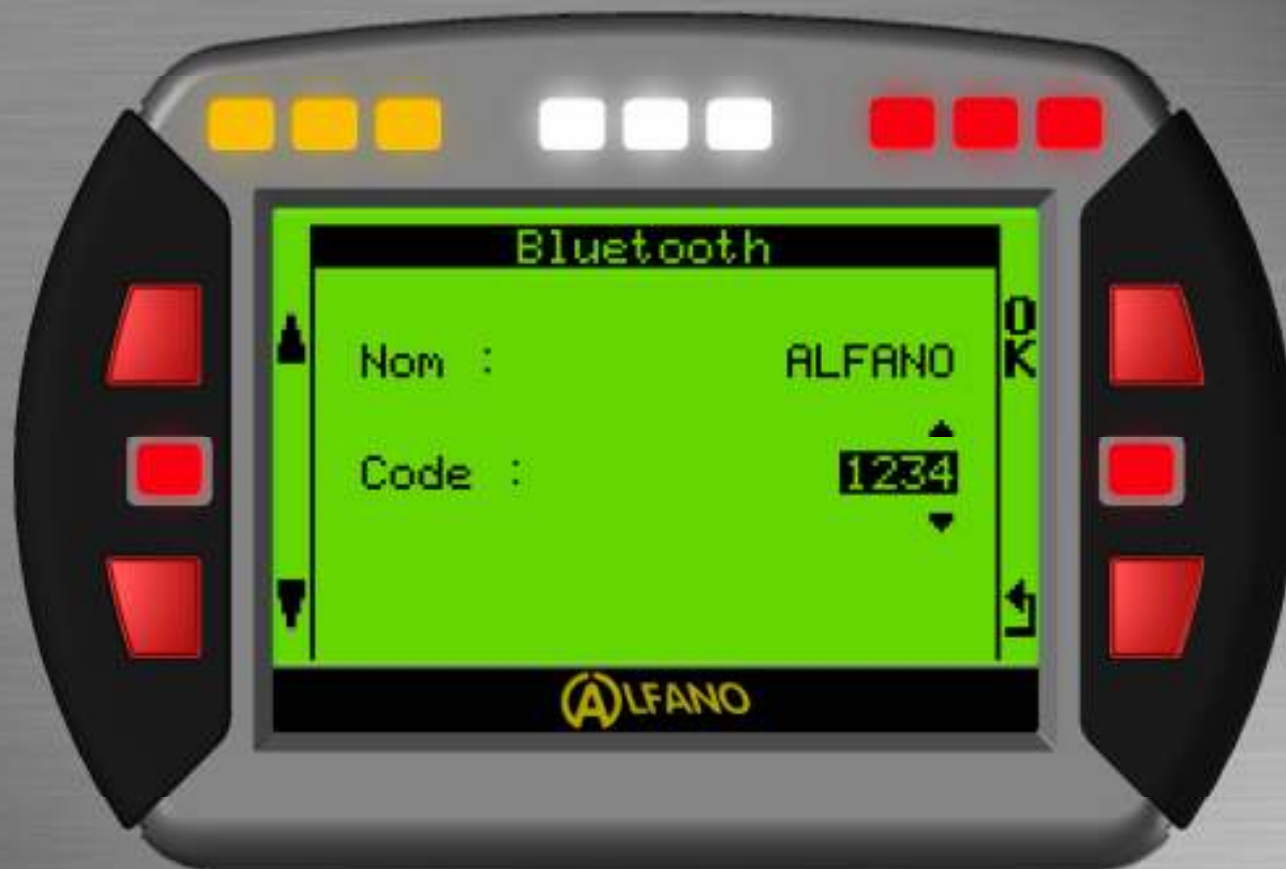


# SETUP MODE





# SETUP MODE







# SETUP MODE





# SETUP MODE





# SETUP MODE





# SETUP MODE





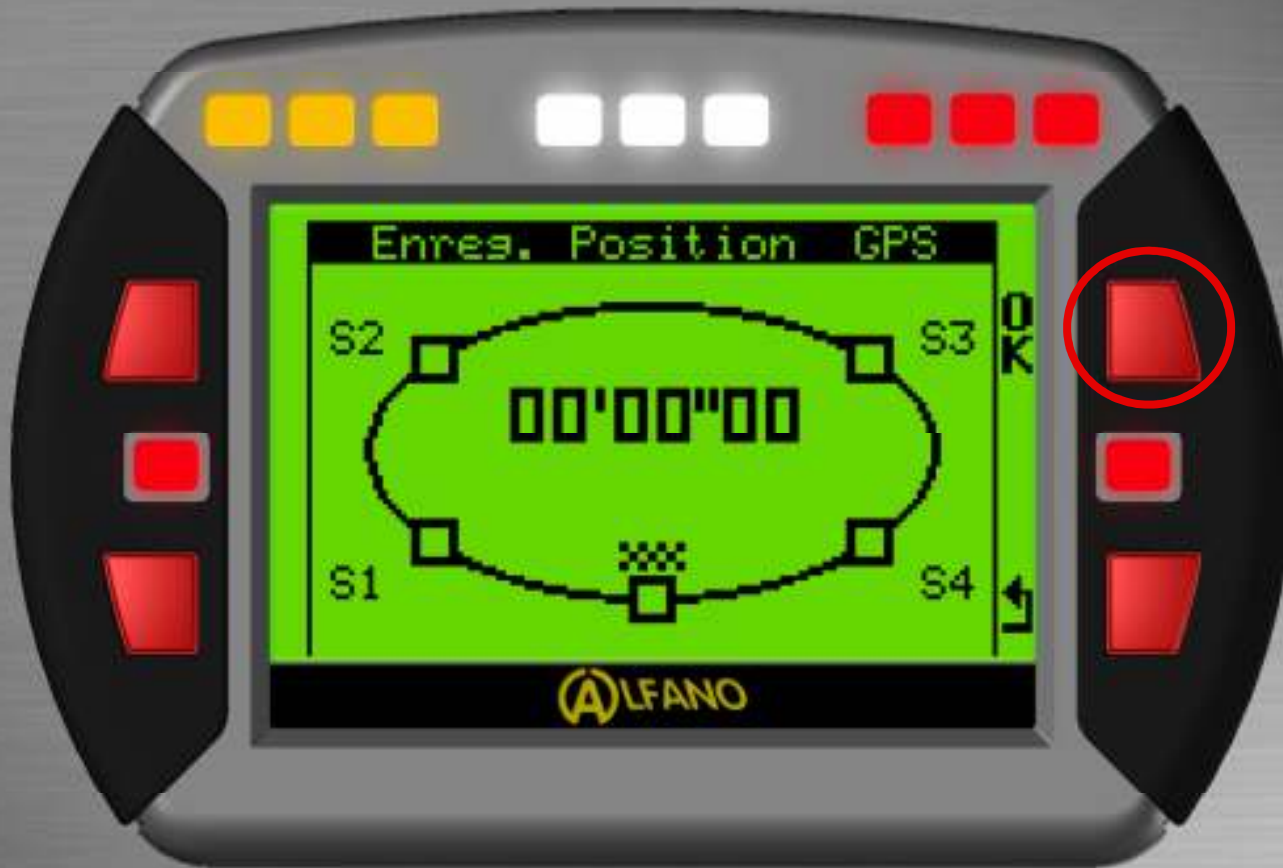


# SETUP MODE





# SETUP MODE





# SETUP MODE





# SETUP MODE







# SETUP MODE





# SETUP MODE





# SETUP MODE





# SETUP MODE





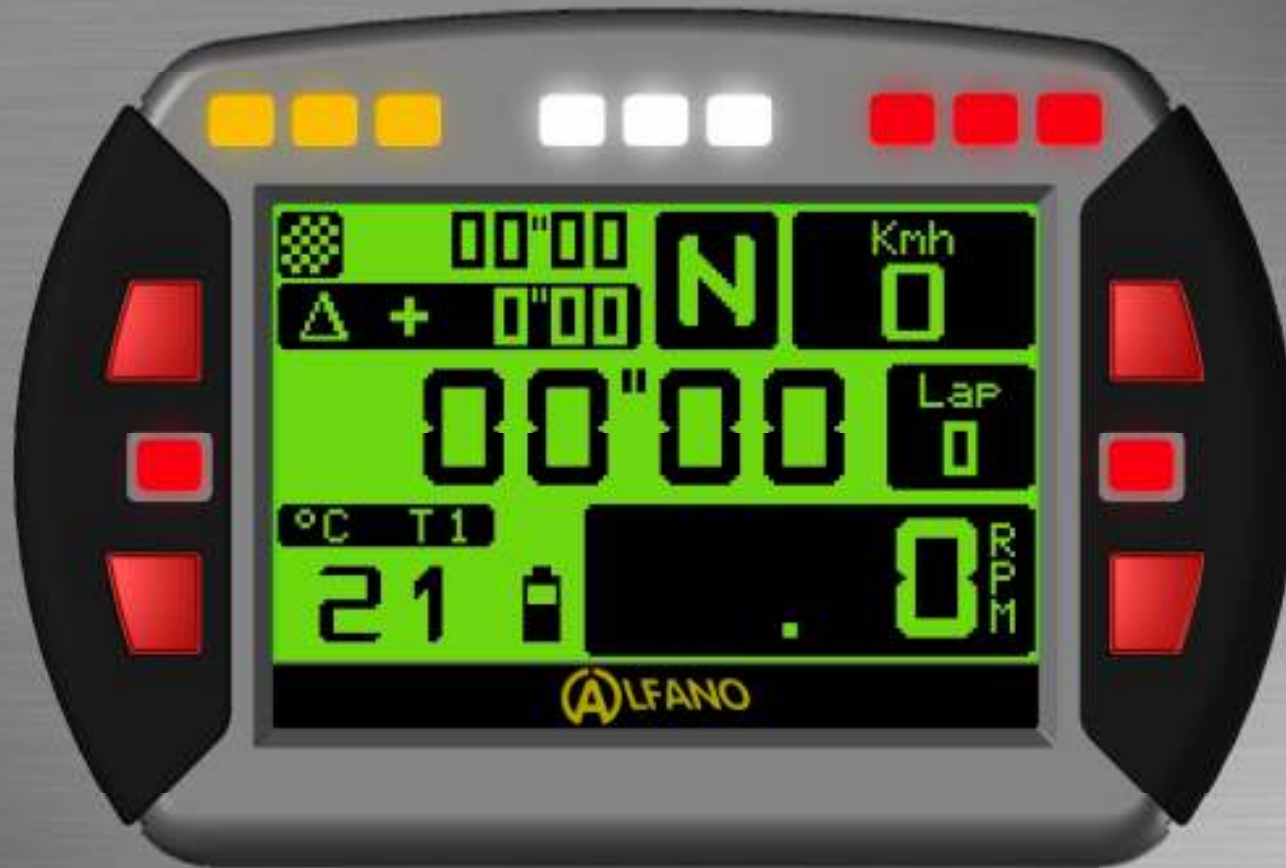


# Race Display MODE



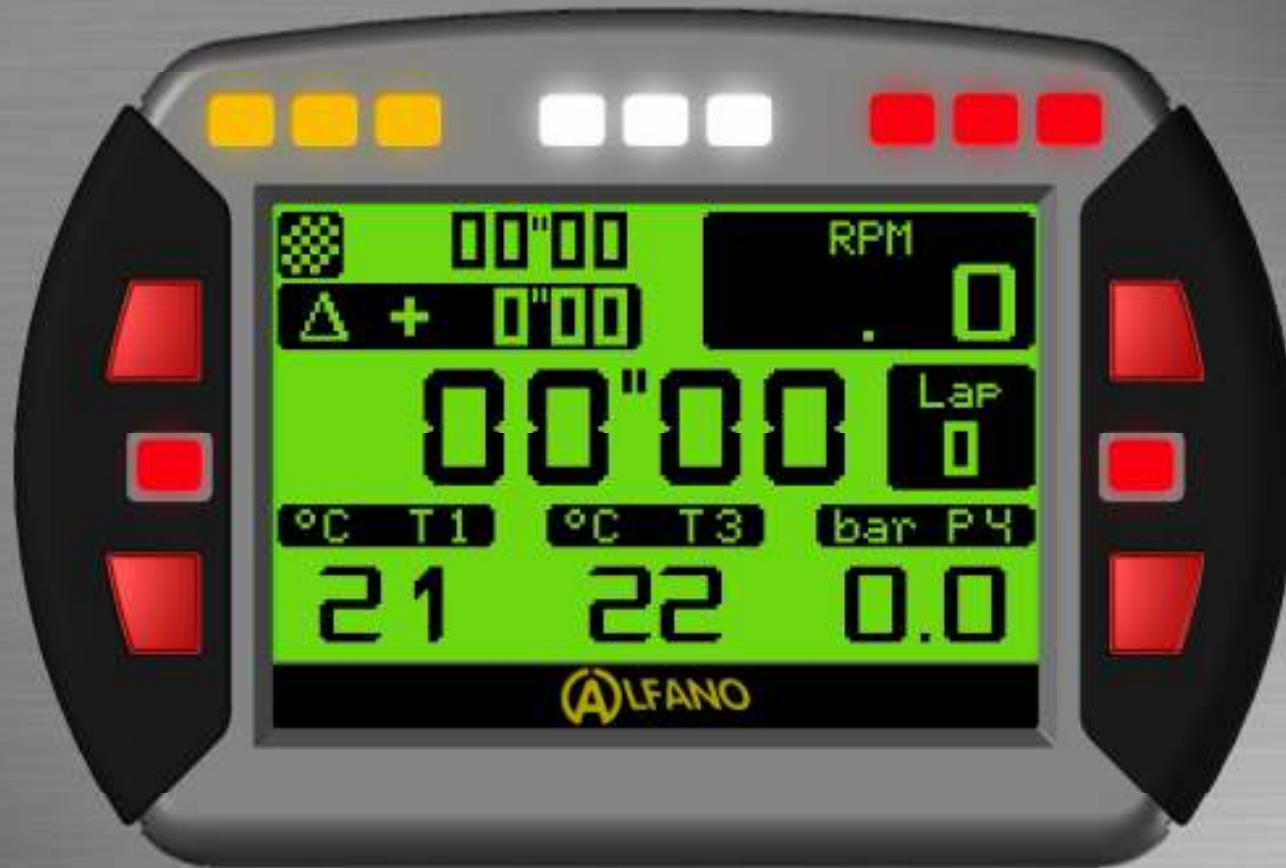


# Race Display MODE



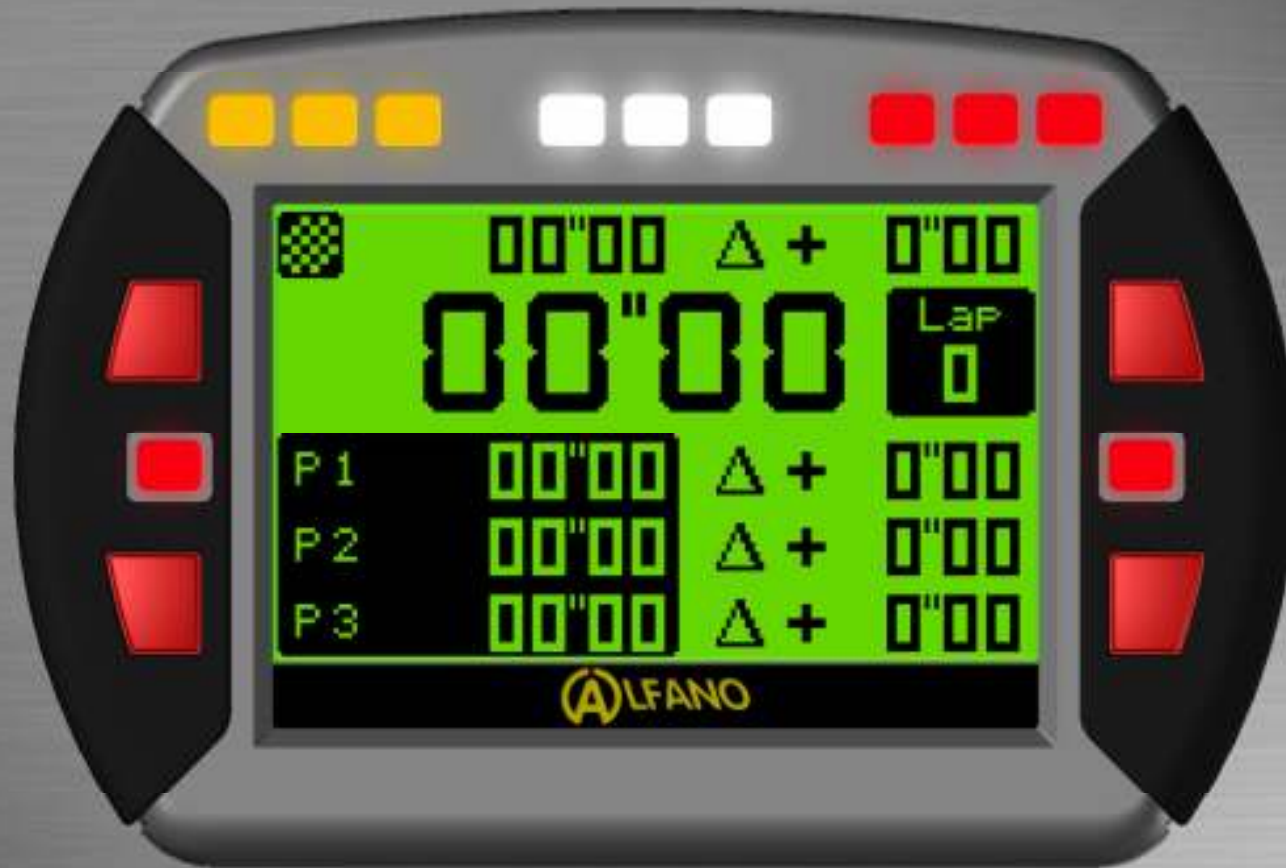


# Race Display MODE





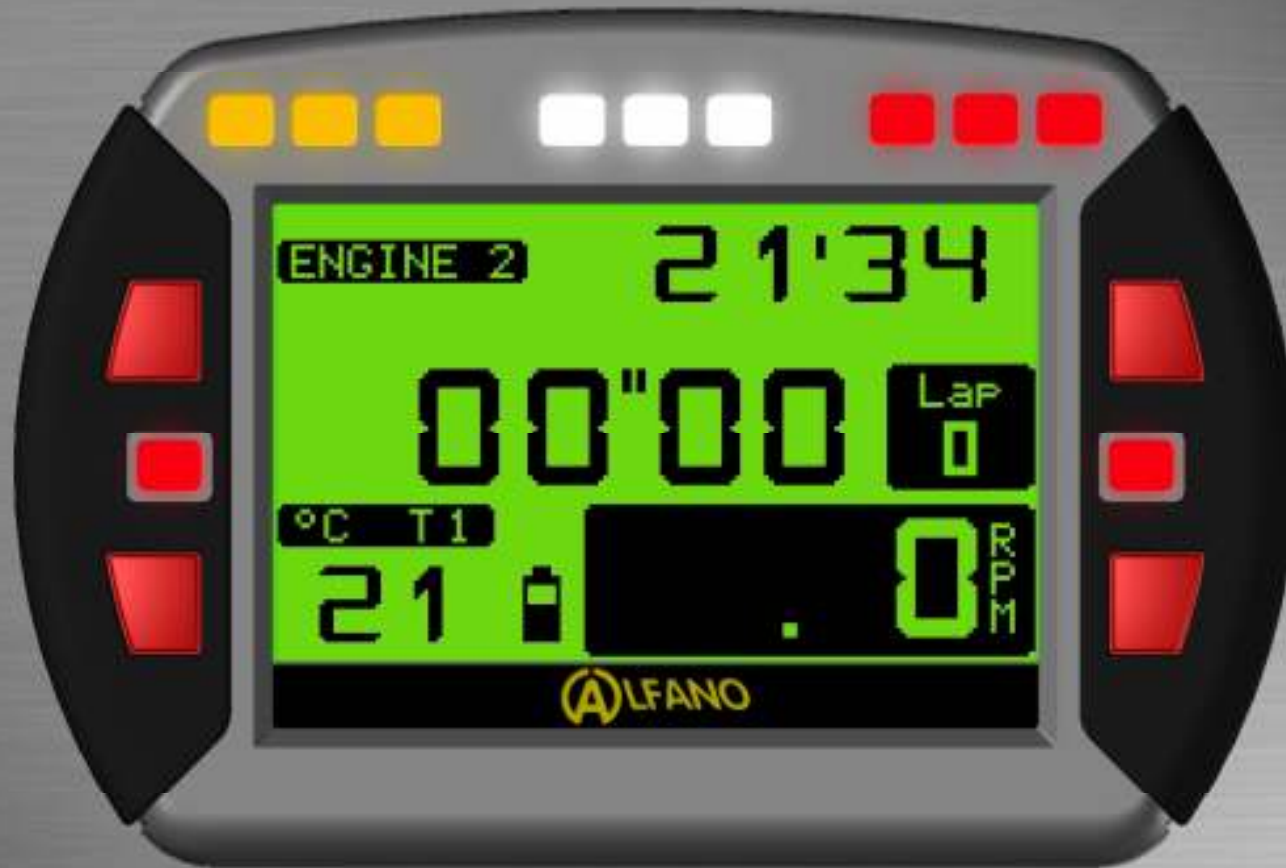
# Race Display MODE







# Race Display MODE





# Race Display MODE





# Upgrade

Upgrade Display



Upgrade Box



Upgrade Extra Box



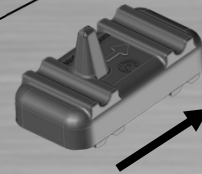
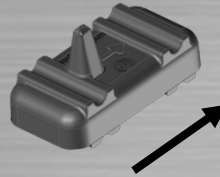
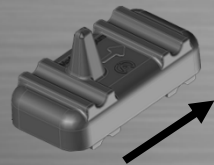


# Transponder ALFANO



**Wireless**

**Magnetic Strip**







## Planning

- Production ADSGPS End March 2012
- Software ADSGPS End April 2012
- Production ADS + ADM + ADL End April 2012
- Production ABX4 + ABX4GPS + ABX10 End April 2012
- Software Visualdata : Upgrade new range End April 2012
- Production ABZ10.2 + ABZ10.3 End May 2012



ADSGPS



ADS

ADM

ADL

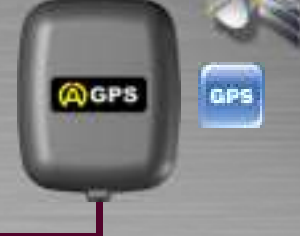


ABX4

ABX4GPS

ABX10

ABGPS



DC 6-12V

ABZ10.2

ADZ10.3

ABGPS

